

SHIMANO

SUPERCUP MTB
MASSI



11-12 FEB

C1

ROUND 1

RIDERS GUIDE

LA NUCÍA

CALENDAR 2023

In the 6th edition of the contest, the Shimano Super Cup Massi makes a leap in quality to experience Mountain Bike in a spectacular way. Big stars and legends of mountain biking have written their great exploits in this championship and 2023 will be another great year for lovers of mountain biking.



11 - 12 of February

LA NUCÍA | ALACANT - C1

24-25-26 of February

BANYOLES | GIRONA - HC

23 of April

BAZA | GRANADA - C1

20-21 of May

SANTA SUSANNA | BARCELONA - C1

04 of June

CALA RATJADA | MALLORCA - C1

23-24 of September

SEA OTTER EUROPE | GIRONA- C1

LOCATION



The next UCI calendar will start earlier than ever; On February 11 and 12 the championship will move to La Nucía. The Alicante town will be the inaugural event of the Shimano Super Cup Massi, and it will debut with the UCI C1 category, giving us a spectacular weekend with races for all ages, on February 11 and 12.



Partida Muixara, s/n, 03530 La Nucia, Alicante
<https://goo.gl/maps/bPDafrygRd8ix4Wr7>

SCHEDULE

SATURDAY 11

10:00h Race Office opening

10:00h Kid's races

16:00h Start Women Race (All women categories)

17:30h Ceremony Awards

SUNDAY 12

08:00h Race Office opening

09:00h Start Cadete and Máster 40/50/60 Men

10:40h Start Junior and Máster 30 Men

12:30h Start Élite y S23 Men

14:15h Ceremony Awards



VILLAGE



- Race Office
- KNOWEATS
- Bike Washing
- Paddock
- Medical Services
- Motorhome Parking
- WC/Showers



Nearest hospitals:

CENTRO DE SALUD LA NUCÍA
Av. Porvilla, 32 (03530 La Nucía)
www.marinabaixa.san.gva.es
Tel.+34 966 81 63 30

HOSPITAL CLÍNICA BENIDORM
Avinguda Alfonso Puchades, 8 (03501 Benidorm)
www.clinicabenidorm.com
Tel.+34 965 85 38 50

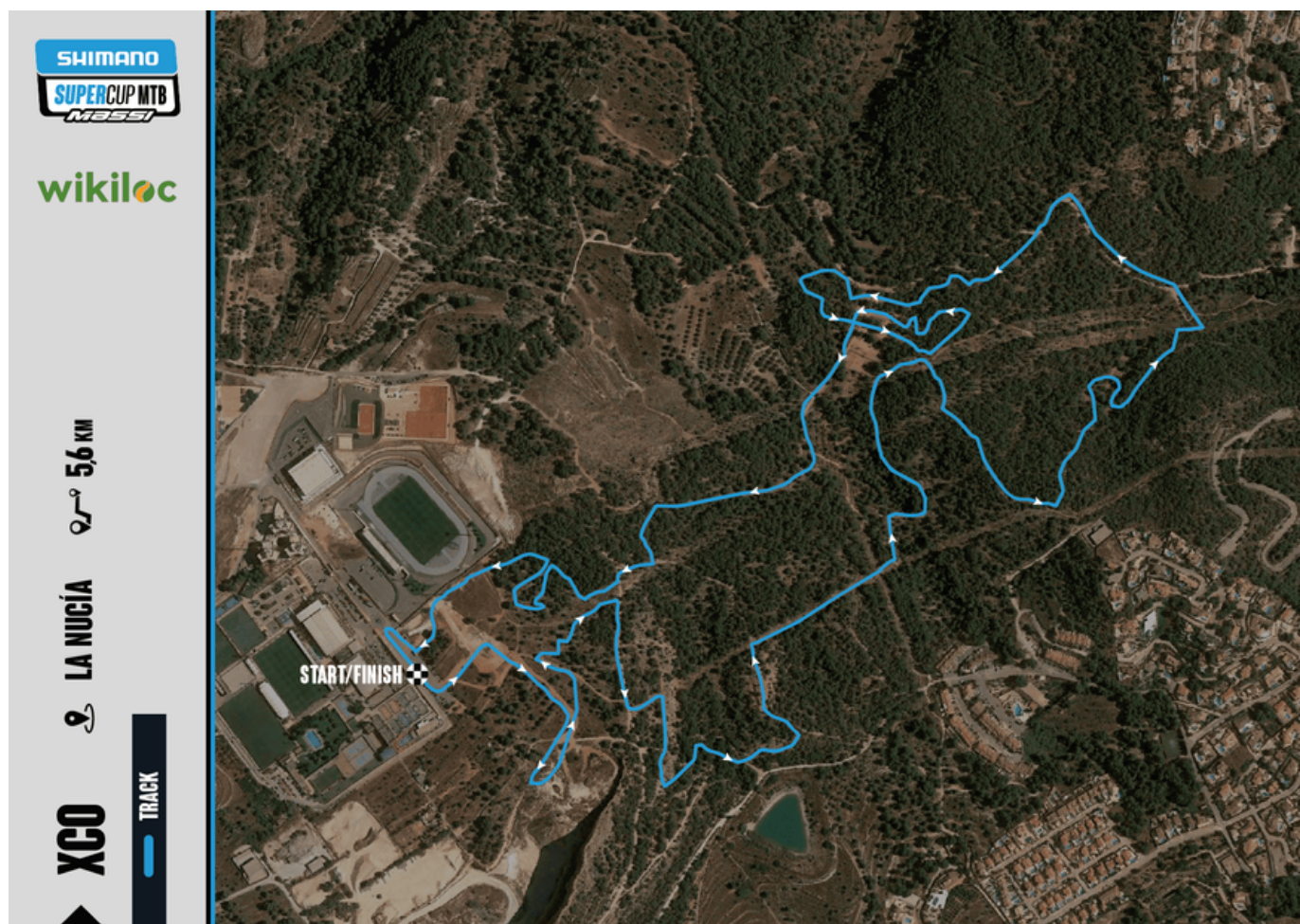
Emergency number: +34 638 602 777

How to arrive?



- Yellow route for entry into the race zone, both cars and motorhomes and campers.
- Red route for secondary parking and facilities of the Ciutat Esportiva Camilo Cano.
- Services: WC's, showers and bicycle cleaning area.

TRACK



wikiloc

Accede a las rutas oficiales
de OCISPORT BIKE en Wikiloc

Get the track!



UCI POINTS & SHIMANO SUPER CUP MASSI CIRCUIT POINTS

PLACE	CLASS 1		XCO JUNIOR
	ELITE & U23	U23**	JUNIOR
1	60	15	20
2	40	10	18
3	30	5	16
4	25	3	14
5	20	1	12
6	18	X	10
7	16		8
8	14		6
9	12		4
10	10		2
11	8		X
12	6		
13	4		
14	2		
15	1		

ATTENTION!

Riders are reminded that the bib number they obtain in the La Nucía event will be the same for the entire Shimano Super Cup Massi circuit, except for the Elit and Sub23 category in the Banyoles event.

CHAMPIONSHIP POINTS								
1	300	26	33	51	18	76	12	
2	262	27	33	52	18	77	12	
3	232	28	33	53	18	78	12	
4	210	29	33	54	18	79	12	
5	192	30	33	55	18	80	12	
6	180	31	30	56	18	81	9	
7	168	32	30	57	18	82	9	
8	156	33	30	58	18	83	9	
9	142	34	30	59	18	84	9	
10	142	35	30	60	18	85	9	
11	120	36	27	61	15	86	9	
12	114	37	27	62	15	87	9	
13	108	38	27	63	15	88	9	
14	102	39	27	64	15	89	9	
15	96	40	27	65	15	90	9	
16	90	41	24	66	15	91	6	
17	84	42	24	67	15	92	6	
18	78	43	24	68	15	93	6	
19	72	44	24	69	15	94	6	
20	66	45	24	70	15	95	6	
21	60	46	21	71	12	96	6	
22	54	47	21	72	12	97	6	
23	48	48	21	73	12	98	6	
24	42	49	21	74	12	99	6	
25	36	50	21	75	12	100	6	
							101<	3

MONEY PRIZES

Ranking	Class 1 / Classe 1	
	XC	
	M&W ELITE	M&W JUNIOR
1	600€	130€
2	500€	100€
3	400€	80€
4	300€	65€
5	250€	55€
6	200€	45€
7	150€	40€
8	125€	30€
9	100€	25€
10	50€	20€
TOTAL	2,675€	590€

The prizes will be paid to the respective winners by bank transfer within a maximum period of two months after the race. The procedure will be reported, apart from in this document, in the information panel of each test:

If you are one of the winners, you can write an email to: rperez@ocisport.net providing your personal and bank accreditation (DNI and bank details), so that the organization can validate your identity and make the bank transfer corresponding to the prize obtained.

RULES

<https://supercupmtb.com/reglamento/>



¡SÍGUENOS Y NO TE PIERDAS NADA!

[f](#) [v](#) [@](#) [ocisporttv.tv](https://www.ocisporttv.tv)

PATROCIONADORES INSTITUCIONALES



TITLE SPONSOR



MAIN SPONSOR



OFFICIAL SPONSORS



SUPPORTED BY



OFFICIAL MAPPING



2023

SHIMANO

SUPERCUP MTB MASSI



11/12 FEB | LA NUCÍA /ALACANT



25/26 FEB | BANYOLES /GIRONA



23 ABR | BAZA /GRANADA



21 MAY | STA SUSANNA /BARCELONA



04 JUN | CALA RATJADA /MALLORCA



23/24 SEP | GIRONA /SEA OTTER EUROPE

TITLE SPONSOR

SHIMANO

MAIN SPONSOR



MASSI

OFFICIAL SPONSOR

INVERSE

Powerbar

SUPPORTED BY



OFFICIAL MAPPING

wikiloc

ORGANIZING

OCISPORT
OUTDOOR EXPERIENCES



WWW.COPACATALANABTT.COM



[COPACATALANAINTERNACIONALBTT](https://www.facebook.com/COPACATALANAINTERNACIONALBTT)



[SUPERCUP.CCI](https://www.instagram.com/SUPERCUP.CCI)



WWW.COPACATALANABTT.COM