

SHIMANO

SUPERCUP MTB
MASSI



11-12 FEB

C1

ROUND 1

RIDERS GUIDE

BAZA

CALENDAR 2023

In the 6th edition of the contest, the Shimano Super Cup Massi makes a leap in quality to experience Mountain Bike in a spectacular way. Big stars and legends of mountain biking have written their great exploits in this championship and 2023 will be another great year for lovers of mountain biking.



11 - 12 of February

LA NUCÍA | ALACANT - C1

24-25-26 of February

BANYOLES | GIRONA - HC

23 of April

BAZA | GRANADA - C1

20-21 of May

SANTA SUSANNA | BARCELONA - C1

04 of June

CALA RATJADA | MALLORCA - C1

24 of September

SEA OTTER EUROPE | GIRONA- C1

LOCATION



Baza, Granada

The hometown of the current world runner-up and Olympic bronze medalist, David Valero, will host the Shimano Super Cup Massi. The XCO test will be at the UCI C1 level, being the most important BTT test in the province, attracting the best national and international cyclists, scoring for the Paris 2024 Olympic Games.



Circuito BTT David Valero, Baza (Granada)
<https://goo.gl/maps/kJXxe6UNfNS6aNTR6>

SCHEDULE

SUNDAY 23

08:00h Race Office opening to bib numbers pick up
(until 30 minutes before each race)

09:00h 1st Start Cadete, Junior (F), Master 30/40 (F)
and Master 40/50/60 (M)

● **10:40h** 2nd Start Elit (F), U23 (F), Junior (M) and Master
30 (M)

10:45h Ceremony awards of the 1st race

● **12:30h** 3th Start Elit (M) and U23 (M)

14:00h Ceremony awards

● Sigue la carrera en directo en

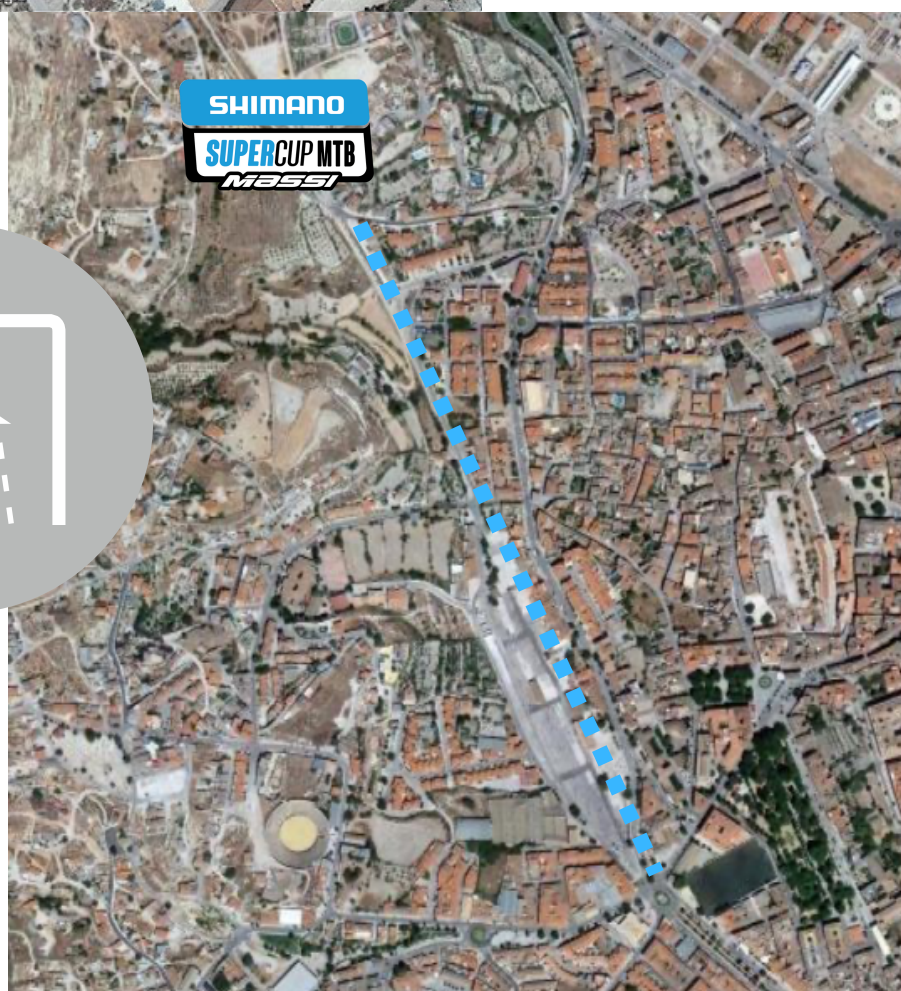


Powerbar®
Evolving mindsets

VILLAGE



- Race Office
- Bike Washing
- Paddock
- Medical Services
- Motorhome Parking
- Parking
- WC/Showers



TRACK



146M+

4,7KM

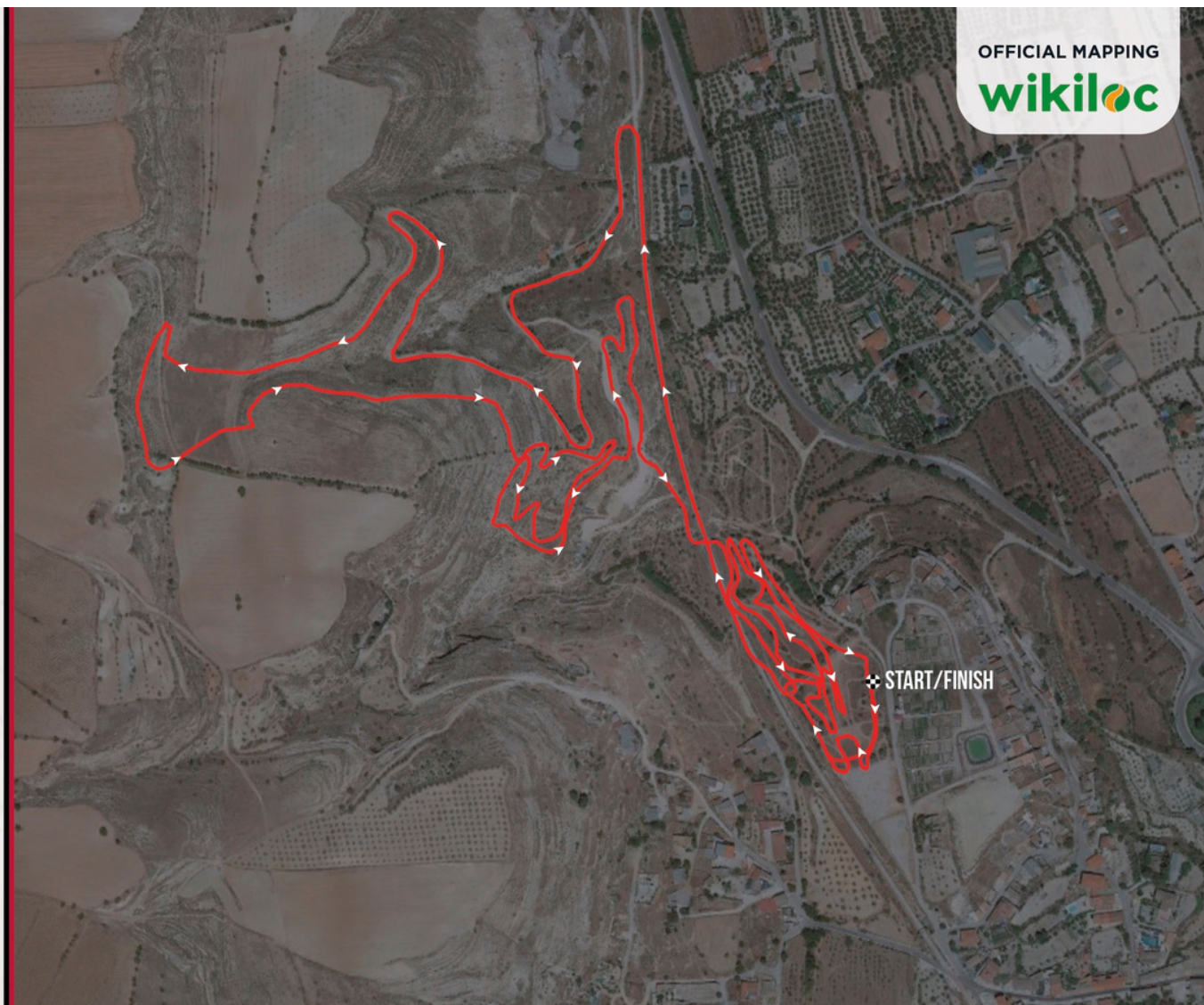
BAZA

XCO

TRACK

OFFICIAL MAPPING

wikiloc



wikiloc

Accede a las rutas oficiales
de OCISPORT BIKE en Wikiloc

Descarga el track!



UCI POINTS & SHIMANO SUPER CUP MASSI CIRCUIT POINTS

PLACE	CLASS 1		XCO JUNIOR
	ELITE & U23	U23**	JUNIOR
1	60	15	20
2	40	10	18
3	30	5	16
4	25	3	14
5	20	1	12
6	18	X	10
7	16		8
8	14		6
9	12		4
10	10		2
11	8		X
12	6		
13	4		
14	2		
15	1		

ATTENTION!

Riders are reminded that the bib number they obtain in the La Nucía event will be the same for the entire Shimano Super Cup Massi circuit, except for the Elit and Sub23 category in the Banyoles event.

CHAMPIONSHIP POINTS								
1	300	26	33	51	18	76	12	
2	262	27	33	52	18	77	12	
3	232	28	33	53	18	78	12	
4	210	29	33	54	18	79	12	
5	192	30	33	55	18	80	12	
6	180	31	30	56	18	81	9	
7	168	32	30	57	18	82	9	
8	156	33	30	58	18	83	9	
9	142	34	30	59	18	84	9	
10	142	35	30	60	18	85	9	
11	120	36	27	61	15	86	9	
12	114	37	27	62	15	87	9	
13	108	38	27	63	15	88	9	
14	102	39	27	64	15	89	9	
15	96	40	27	65	15	90	9	
16	90	41	24	66	15	91	6	
17	84	42	24	67	15	92	6	
18	78	43	24	68	15	93	6	
19	72	44	24	69	15	94	6	
20	66	45	24	70	15	95	6	
21	60	46	21	71	12	96	6	
22	54	47	21	72	12	97	6	
23	48	48	21	73	12	98	6	
24	42	49	21	74	12	99	6	
25	36	50	21	75	12	100	6	
							101<	3

MONEY PRIZES

Ranking	Class 1 / Classe 1	
	XC	
	M&W ELITE	M&W JUNIOR
1	600€	130€
2	500€	100€
3	400€	80€
4	300€	65€
5	250€	55€
6	200€	45€
7	150€	40€
8	125€	30€
9	100€	25€
10	50€	20€
TOTAL	2,675€	590€

The prizes will be paid to the respective winners by bank transfer within a maximum period of two months after the race. The procedure will be reported, apart from in this document, in the information panel of each test:

If you are one of the winners, you can write an email to: rperez@ocisport.net providing your personal and bank accreditation (DNI and bank details), so that the organization can validate your identity and make the bank transfer corresponding to the prize obtained.

RULES

<https://supercupmtb.com/reglamento/>

Nearest Hospital:

HOSPITAL PUBLICO COMARCAL DE BAZA

Direction: Carr. de Murcia, S/N, 18800 Baza, Granada

Opening 24 h

Telephone: 958 03 13 00

Emergency number of the organization:

+34 638 602 777



INSTITUTIONAL SPONSORS



TITLE SPONSOR



MAIN SPONSOR



OFFICIAL SPONSORS



SUPPORTED BY



TECHNOLOGY PARTNER



OFFICIAL MAPPING



2020

SHIMANO

SUPERCUP MTB

MASSI



C1 11/12 FEB | LA NUCÍA /ALACANT

HC 25/26 FEB | BANYOLES /GIRONA

C1 23 ABR | BAZA /GRANADA

C1 21 MAY | STA SUSANNA /BARCELONA

C1 04 JUN | CALA RATJADA /MALLORCA

C1 23/24 SEP | GIRONA / SEA OTTER EUROPE

TITLE SPONSOR

SHIMANO

MAIN SPONSOR



MASSI

OFFICIAL SPONSOR



INVERSE

Powerbar

SUPPORTED BY



TECHNOLOGY PARTNER

GARMIN.

OFFICIAL MAPPING

wikiloc

ORGANIZING



WWW.COPACATALANABTT.COM



COPACATALANAINTERNACIONALBTT



SUPERCUP.CCI



WWW.COPACATALANABTT.COM