

SHIMANO

SUPERCUP MTB

MASSI

2024

C1

28 ABR

SABIÑÁNIGO

// HUESCA



SÁBADO 27

17:00H SALIDA MINIQUEBRANTAHUESOS

DOMINGO 28

08:00H RECOGIDA DE DORSALES

09:00H 1ª SALIDA: CADETE, JUNIOR (F), M30/40 (F)
Y M40/50/60 (M)

10:40H 2ª SALIDA: ÉLITE (F), S23 (F),
JUNIOR (M) Y M30 (M)

10:50H ENTREGA DE PREMIOS 1ª SALIDA

12:30H 3ª SALIDA: ÉLITE (M), S23 (M)

14:00H ENTREGA DE PREMIOS



turismo



TELÉFONO

SHIMANO

EN BICICLETA



FRASE DE MOTIVACIÓN



OFICINA DE ENTRENAMIENTO



MEMBER OF



OFICINA DE EQUIPOS



OFICINA DE SERVICIOS



OFICINA DE PRODUCTOS





LIVE 
STREAM

SABIÑÁNIGO

 OCISPORTTV.TV

+



28 APR

10AM WOMEN ELITE

10H FÉMINAS ÉLITE

12:15PM MEN ELITE

12:15H HOMBRES ÉLITE

 OCISPORTTV.TV

+

CHAMPIONSHIP



Shimano Super Cup Massi is the world's leading Mountain Bike competition. Since its creation in 2002, its prestige has been growing spectacularly. After a long history, it is the second circuit that distributes the most UCI points in the world.

Circuit of 7 tests XCO format of UCI category and scoring for the World ranking.



TITLE SPONSOR SHIMANO	MAIN SPONSOR MASSI	OFFICIAL SPONSOR ESPEANMI	OFFICIAL BIKE WASH PRORIDE
SUPPORTED BY UCI	REAL FEDERACIÓN ESPAÑOLA CICLISMO	TECHNOLOGY PARTNER GARMIN	OFFICIAL MAPPING wikiloc
	COSTA BRAVA - GIRONA SEA OTTER EUROPE BIKE SHOW		ORGANIZING OCISPORT OUTDOOR EXPERIENCES

REGISTRATIONS



Registrations can be made through the registration form available on the event website until the Wednesday before the test at 11:59 p.m.

Payment will be made directly on the WEBSITE, if payment is not made registration will not be confirmed.

Telephone: +34 938 088 091.

Email: hola@ocisport.net,
www.ocisport.net

WWW.SUPERCUPMTB.COM



RULES

The official regulations of the test can be found on the event website:

[RULES](#)



PROGRAM



SUNDAY 28

08:00h Race office opening to pick up bib numbers

09:00h 1st Start: Cadet (M/W), Junior (W), Master 30/40 (W) and Master 40/50/60 (M)

10:40h 2nd Start: Elit (W), U23 (W), Junior (M) and Master 30 (M)

10:50h Ceremony awards of first race

12:30h 3rd Start: Elit (M) and S23 (M)

14:00h Ceremony awards



Powerbar[®]
Evolving mindsets

TITLE SPONSOR

SHIMANO

MAIN SPONSOR

MASSI

OFFICIAL SPONSOR

INVERSI

OFFICIAL BIKE WASH

PRORIDE

SUPPORTED BY

UCI

REAL FEDERACIÓN ESPAÑOLA
CICLISMO

COSTA BRAVA - GIRONA
SEA OTTER EUROPE
BIKE SHOW

TECHNOLOGY PARTNER

GARMIN.

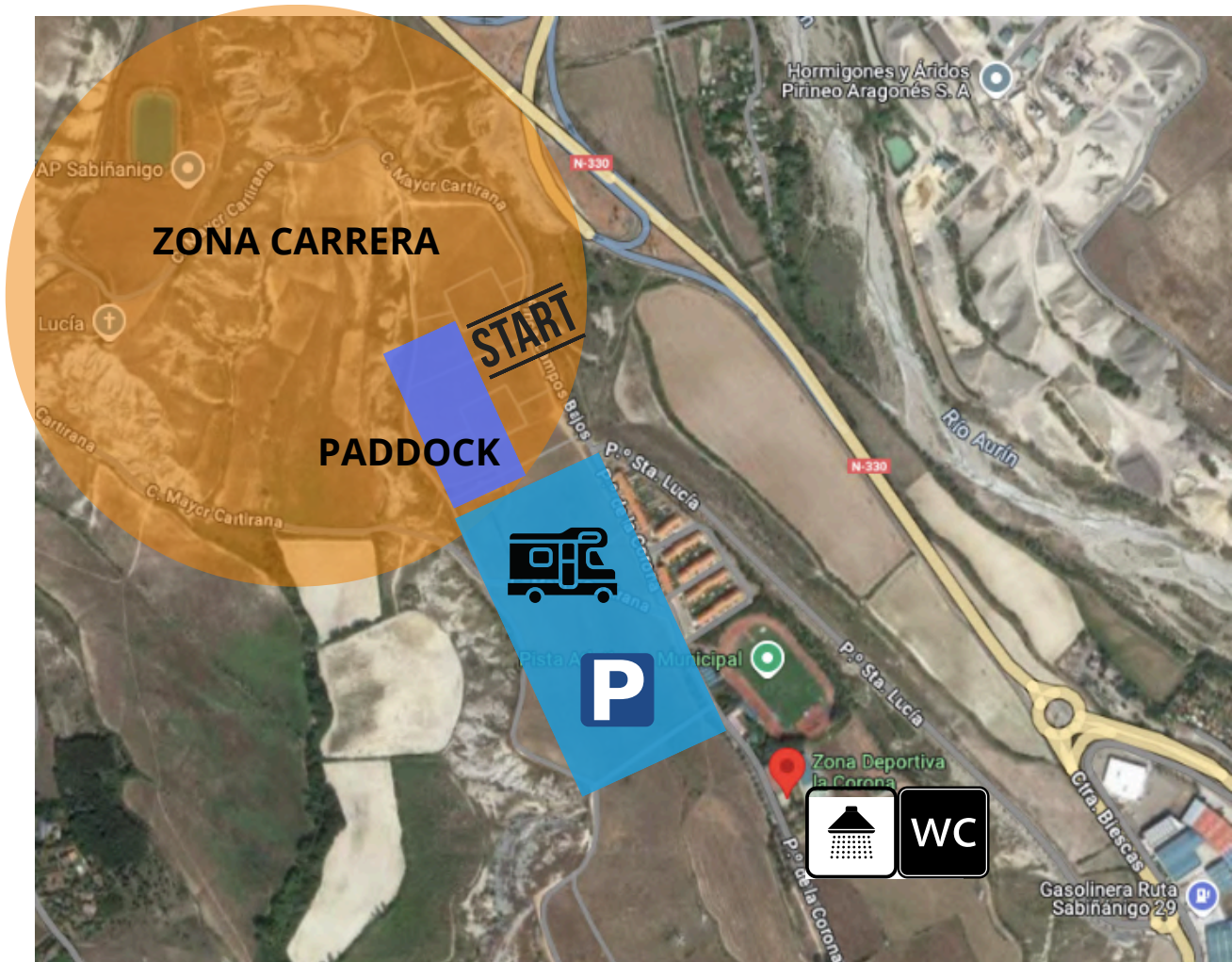
OFFICIAL MAPPING

wikiloc

ORGANIZING

OCISPORT
OUTDOOR EXPERIENCES

LOCATION



TRACK



OFFICIAL MAPPING
wikiloc



📍 SABIÑÁNIGO

🔄 XCO

📏 5,4KM



Accede a las rutas oficiales de OCISPORT BIKE en Wikiloc

TITLE SPONSOR



MAIN SPONSOR



OFFICIAL SPONSOR



OFFICIAL BIKE WASH



SUPPORTED BY



TECHNOLOGY PARTNER



OFFICIAL MAPPING



ORGANIZING



SERVICES



BIB NUMBERS

In the first test in which you participate, the number is collected and it will be the same for the following tests on the circuit. In case of perdua, 5 euros will be charged for the next number and the reassignment of the participant.

In the first test you participate you also get the circuit gift t-shirt.

PADDOCK

For teams that want to make a reservation, there will be a single payment for all events of the Shimano Super Cup Massi 2024. Fill out the Paddock reservation form on the website.

Email: furgell@ocisport.net or www.ocisport.net



MORE INFORMATION



CATEGORIES

- Women: Elit, U23, Junior, Cadet, Master 30, Master 40 and Master 50/60.
- Men: Elit, U23, Junior, Cadet, Master 30, Master 40 and Master 50/60.

CHAMPIONSHIP POINTS

Regarding the GENERAL classification of the Super Cup, the 6 best results of each runner will score.

The distribution of points for the championship will be as follows:

CHAMPIONSHIP POINTS							
1	300	26	33	51	18	76	12
2	262	27	33	52	18	77	12
3	232	28	33	53	18	78	12
4	210	29	33	54	18	79	12
5	192	30	33	55	18	80	12
6	180	31	30	56	18	81	9
7	168	32	30	57	18	82	9
8	156	33	30	58	18	83	9
9	142	34	30	59	18	84	9
10	142	35	30	60	18	85	9
11	120	36	27	61	15	86	9
12	114	37	27	62	15	87	9
13	108	38	27	63	15	88	9
14	102	39	27	64	15	89	9
15	96	40	27	65	15	90	9
16	90	41	24	66	15	91	6
17	84	42	24	67	15	92	6
18	78	43	24	68	15	93	6
19	72	44	24	69	15	94	6
20	66	45	24	70	15	95	6
21	60	46	21	71	12	96	6
22	54	47	21	72	12	97	6
23	48	48	21	73	12	98	6
24	42	49	21	74	12	99	6
25	36	50	21	75	12	100	6
						101<	3

TITLE SPONSOR



MAIN SPONSOR



OFFICIAL SPONSOR



OFFICIAL BIKE WASH



SUPPORTED BY



TECHNOLOGY PARTNER



OFFICIAL MAPPING



ORGANIZING



MORE INFORMATION



For the TEAM Classification they will score as follows:

They will score with 100% of the points:

- 2 Elit
- 2 U23
- 2 Women Elite
- 2 Women U23

They will score with 50% of the points:

- 2 Junior Men
- 2 Junior Women
- 2 Cadet Men
- 2 Cadet Women
- 2 Master 30 Men
- 2 Master 30 Women
- 2 Master 40 Men
- 2 Master 40 Women
- 2 Master 50 Men

UCI POINTS

The UCI points score will be distributed as follows, according to the category:

ONE DAY RACE							
PLACE	HORS CLASS		CLASS 1		CLASS 2	XCO JUNIOR	XCO JUNIOR SERIES
	ELITE/ U23	U23**	ELITE/ U23	U23**	ELITE/ U23	JUNIOR	JUNIOR
1	100	60	60	15	30	20	90
2	80	40	40	10	25	18	70
3	60	30	30	5	15	16	60
4	50	25	25	3	12	14	50
5	40	20	20	1	10	12	40
6	35	18	18	X	8	10	35
7	30	16	16		6	8	30
8	27	14	14		4	6	27
9	24	12	12		2	4	24
10	22	10	10		1	2	22
11	20	8	8		X	X	20
12	18	6	6				18
13	16	4	4				16
14	14	2	2				14
15	12	1	1				12
16	10	X	X				10
17	9						8
18	8						7
19	7						6
20	6						5
21	5						4
22	4						3
23	3						2
24	2						1
25	1						X
26	X						

TITLE SPONSOR



MAIN SPONSOR



OFFICIAL SPONSOR



OFFICIAL BIKE WASH



SUPPORTED BY



TECHNOLOGY PARTNER



OFFICIAL MAPPING



ORGANIZING



MORE INFORMATION



AWARDS

They will be awarded in the XCO race as follows:

Mountain Bike – Prize Money						
Ranking	HC		Class 1 / Classe 1		Class 2 / Classe 2	
	XC		XC		XC	
	M&W ELITE	M&W JUNIOR	M&W ELITE	M&W JUNIOR	M&W ELITE	M&W JUNIOR
1	1.000€	200€	600€	130€	250€	80€
2	800€	130€	500€	100€	200€	65€
3	600€	100€	400€	80€	150€	50€
4	500€	80€	300€	65€	125€	30€
5	400€	65€	250€	55€	100€	25€
6	300€	50€	200€	45€	90€	
7	250€	45€	150€	40€	80€	
8	200€	30€	125€	30€	70€	
9	150€	25€	100€	25€	60€	
10	100€	20€	50€	20€	50€	
TOTAL	4,300€	745€	2,675€	590€	1,175€	250€

The prizes will be paid to the corresponding winners by bank transfer within a maximum period of two months after the race. The runner's dossier and the information panel of each test will be informed of the procedure to receive the prize:

If you are one of the winners, you can write an email to the address: rperez@ocisport.net providing your personal and banking accreditation (ID and bank details), so that the organization can validate the identity and make the bank transfer corresponding to the prize obtained.



ADDITIONAL INFORMATION



MEDICAL SERVICES

During the race : 2 SVA

NEAREST HOSPITAL

Centro de Salud (Avenida Huesca, 20, Tlf 974 48 14 14)

Hospital de Jaca (Calzada Rapitá, s/n, 22700 Jaca, Huesca, Tlf 974 35 53 31)

EMERGENCY CONTACT

Organization: +34 638 602 777

Emergencis: 112

ORGANIZATION

Email contact: hola@ocisport.net



TITLE SPONSOR



MAIN SPONSOR



OFFICIAL SPONSOR



OFFICIAL BIKE WASH



SUPPORTED BY



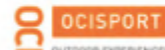
TECHNOLOGY PARTNER



OFFICIAL MAPPING



ORGANIZING



INSTITUTIONAL SPONSORS



OFFICIAL SPONSORS



TITLE SPONSOR



MAIN SPONSOR



OFFICIAL SPONSORS



OFFICIAL BIKE WASH



OFFICIAL MAPPING



TECHNOLOGY PARTNER



ORGANIZERS



SUPPORTED BY

