

SHIMANO

SUPERCUP MTB

MASSI

2025



8-9 FEBRUARY LA NUCÍA ALICANTE

SATURDAY 8

09:00H BIB PICK UP UNTIL 30 MINUTES BEFORE EVERY RACE

10:00H START SCHOOL RACES (OPEN FCCV)

12:00-14:00 FREE TRAINING

14:30H START M30/40/50/60 (M)

16:15H START JUNIOR (M)

17:30H AWARDS CEREMONY

SUNDAY 9

08:00H BIB PICK UP UNTIL 30 MINUTES BEFORE EVERY RACE

09:00H START CADET (M)

10:30H START FEMALE RACE (ALL CATEGORIES)

12:30H START ELITE/U23 (M)

14:00H AWARDS CEREMONY



TITLE SPONSOR

SHIMANO

MAIN SPONSOR



OFFICIAL SPONSOR



OFFICIAL BIKE WASH



SUPPORTED BY



TECHNOLOGY PARTNER



OFFICIAL MAPPING



ORGANIZING



WWW.SUPERCUPMTB.COM

[COPACATALANAINTERNACIONALBTT](https://www.facebook.com/COPACATALANAINTERNACIONALBTT)

[SUPERCUP.CCI](https://www.instagram.com/SUPERCUP.CCI)

WWW.SUPERCUPMTB.COM






SHIMANO

SUPERCUP MTB

2025

MASSI



- | | | |
|---|--|---|
|  8-9 FEB LA NUCÍA
ALICANTE |  23 MAR SABIÑÁNIGO
HUESCA |  31 MAY NATURLAND
SANT JULIA DE LORIA ANDORRA |
|  22-23 FEB BANYOLES
GIRONA |  11 MAY STA. SUSANNA
BARCELONA |  20 SEP SEA OTTER EUROPE
GIRONA |

TITLE SPONSOR

SHIMANO

MAIN SPONSOR

MASSI

OFFICIAL SPONSOR

INVERSE **Powerbar** **SIROKO** **PRORIDE**

OFFICIAL BIKE WASH

SUPPORTED BY

UCI **CICLISMO**

TECHNICAL PARTNER

SEA OTTER EUROPE

OFFICIAL MAPPING

wikiloc

ORGANIZING

OCISPORT

WWW.SUPERCUPMTB.COM

[COPACATALANAINTERNACIONALBTT](https://www.facebook.com/COPACATALANAINTERNACIONALBTT)

[SUPERCUP.CCI](https://www.instagram.com/SUPERCUP.CCI)

WWW.SUPERCUPMTB.COM

PRESENTATION



The Shimano Super Cup Massi is a premier global Mountain Bike competition. Since its inception in 2002, its prestige has grown impressively. After many years, it has become the second-highest UCI point-scoring circuit in the world.

This circuit consists of 6 UCI-sanctioned XCO format events, all of which count toward the World Ranking.



TITLE SPONSOR

SHIMANO

MAIN SPONSOR

MASSI

OFFICIAL SPONSOR

INVERSE

Powerbar

SIROKO

OFFICIAL BIKE WASH

PRORIDE

SUPPORTED BY

UCI

CICLISMO

SEA OTTER EUROPE

TECHNOLOGY PARTNER

GARMIN

OFFICIAL MAPPING

wikiloc

ORGANIZING

OCISPORT



PROGRAM

SATURDAY 8th FEBRUARY

09:00 a.m. Bib number collection (available until 30 minutes before each race)

10:00 a.m.-12:00 p.m. School races (Open FCCV)

12:00 p.m.-2:00 p.m. Open training sessions

2:30 p.m. Start for Masters 30/ 40/ 50/ 60 (M)

4:15 p.m. Start for Junior (M)

5:30 p.m. Awards ceremony

SUNDAY 9th FEBRUARY

8:00 a.m. Bib number collection (available until 30 minutes before each race)

9:00 a.m. Start for Cadet (M)

10:30 a.m. Start for Women (All categories)

12:30 p.m. Start for Elite/ U23 categories (M)

2:00 p.m. Awards ceremony

*Note that the schedule is provisional and can be changed



TITLE SPONSOR

SHIMANO

MAIN SPONSOR

MASSI

OFFICIAL SPONSOR

INVERSE

Powerbar

SIROKO

OFFICIAL BIKE WASH

PRORIDE

SUPPORTED BY

UCI

REAL FEDERACIÓN ESPAÑOLA
CICLISMO

COSTA BRAVA - GIRONA
SEA OTTER EUROPE
BIKE SHOW

TECHNOLOGY PARTNER

GARMIN

OFFICIAL MAPPING

wikiloc

ORGANIZING

OCISPORT
OUTDOOR EXPERIENCES

LOCALITION



Ciudad Deportiva Camilo Cano, La Nucía (Alicante).



Bib number collection



Shower and service location



Paddock UCI Elite



Paddock

Powerbar

TITLE SPONSOR

SHIMANO

MAIN SPONSOR

MASSI

OFFICIAL SPONSOR

INVERSE

Powerbar

SIROKO

OFFICIAL BIKE WASH

PRORIDE

SUPPORTED BY

UCI

REAL FEDERACIÓN ESPAÑOLA
CICLISMO

COSTA BRAVA - GIRONA
SEA OTTER EUROPE
BIKE SHOW

TECHNOLOGY PARTNER

GARMIN

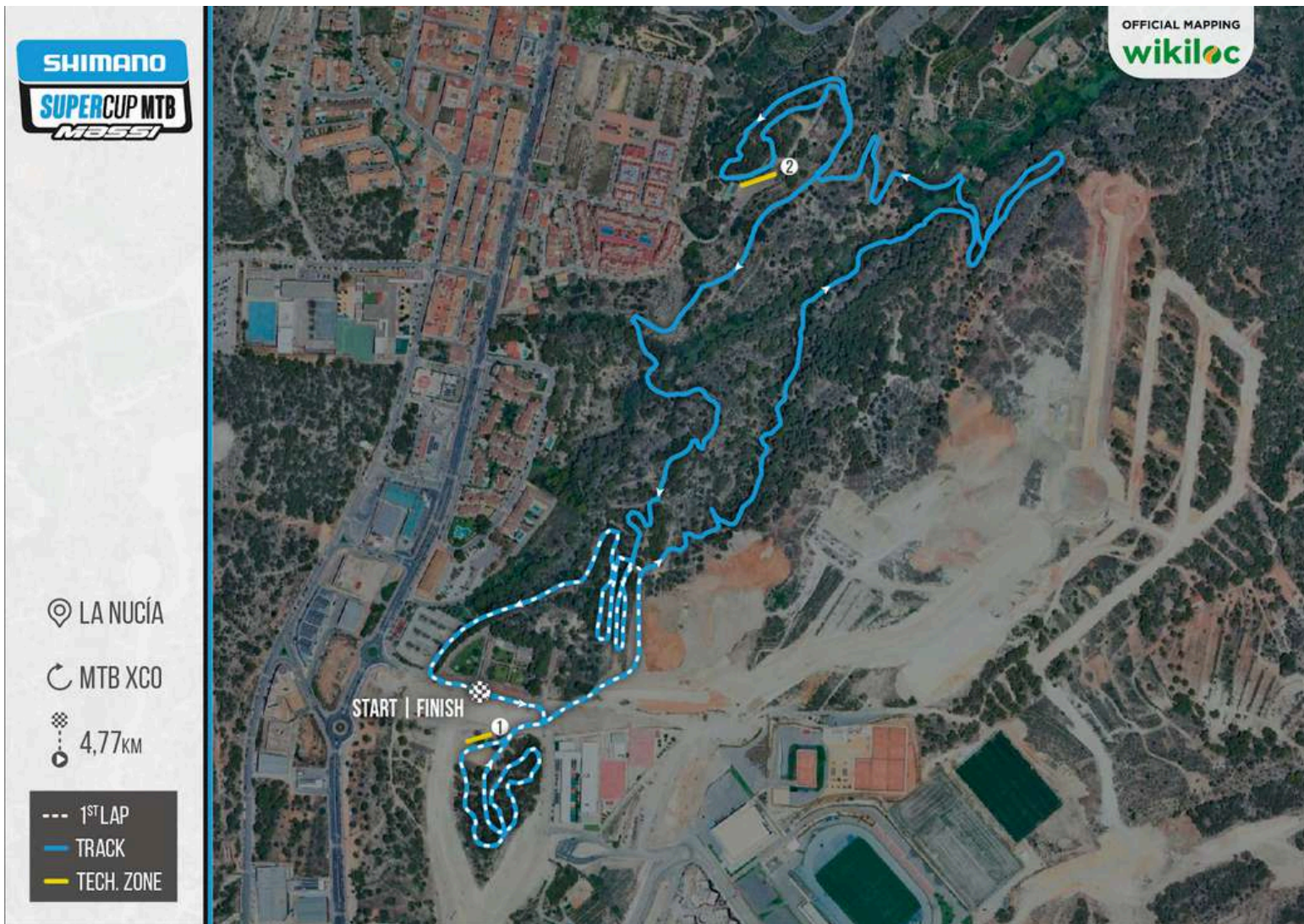
OFFICIAL MAPPING

wikiloc

ORGANIZING

OCISPORT
OUTDOOR EXPERIENCES

TRACK



TITLE SPONSOR

SHIMANO

MAIN SPONSOR

MASSI

OFFICIAL SPONSOR

INVERSE

Powerbar

SIROKO

OFFICIAL BIKE WASH

PRORIDE by PROQUIMIA

SUPPORTED BY

UCI

REAL FEDERACIÓN ESPAÑOLA
CICLISMO

COSTA BRAVA - GIRONA
SEA OTTER EUROPE
BIKE SHOW

TECHNOLOGY PARTNER

GARMIN

OFFICIAL MAPPING

wikiloc

ORGANIZING

OCISPORT
OUTDOOR EXPERIENCES

INFORMATION



The bib number given in La Nucía is valid for the whole Shimano Super Cup Massi/ Copa Catalana Internacional Championship. In case of losing it, the rider will have to pay 5€.

PRIZE MONEY

The prizes will be paid to the corresponding winners via bank transfer within a maximum of two months after the race. The procedure for receiving the prize will be provided in the rider's dossier and on the information panel at each event.

If you are one of the winners, you can send an email to: rperez@ocisport.net, providing your personal and banking details (ID and bank information), so the organization can validate your identity and process the bank transfer for the prize awarded.

RULES

TITLE SPONSOR

SHIMANO

MAIN SPONSOR

MASSI

OFFICIAL SPONSOR

INVERSE

Powerbar

SIROKO

OFFICIAL BIKE WASH

PRORIDE

SUPPORTED BY

UCI

REAL FEDERACIÓN ESPAÑOLA
CICLISMO

COSTA BRAVA - GIRONA
SEA OTTER EUROPE
BIKE SHOW

TECHNOLOGY PARTNER

GARMIN

OFFICIAL MAPPING

wikiloc

ORGANIZING

OCISPORT
OUTDOOR EXPERIENCES

ADDITIONAL INFORMATION



REFERRAL HOSPITAL

CENTRO DE SALUD LA NUCÍA
Avd. Porvilla, 32 (03530 La Nucía)
www.marinabaixa.san.gva.es
Telf. +34 966 81 63 30

HOSPITAL CLÍNICA BENIDORM
Avd. Alfonso Puchades, 8 (03501 Benidorm)
www.clinicabenidorm.com
Telf. +34 965 85 38 50

EMERGENCY CONTACT

Organization: +34 638 602 777
Emergencies: 112

ORGANIZATION

Contact Email: hola@ocisport.net



TITLE SPONSOR

SHIMANO

MAIN SPONSOR

MASSI

OFFICIAL SPONSOR

INVERSE

Powerbar

SIROKO

OFFICIAL BIKE WASH

PRORIDE

SUPPORTED BY

UCI

REAL FEDERACIÓN ESPAÑOLA
CICLISMO

COSTA BRAVA - GIRONA
SEA OTTER EUROPE
BIKE SHOW

TECHNOLOGY PARTNER

GARMIN

OFFICIAL MAPPING

wikiloc

ORGANIZING

OCISPORT
OUTDOOR EXPERIENCES

INSTITUTIONAL SPONSORS



TITLE SPONSOR

SHIMANO

MAIN SPONSOR



OFFICIAL SPONSORS



SIROKO

OFFICIAL BIKE WASH



SUPPORTED BY



TECHNOLOGY PARTNER

GARMIN

OFFICIAL MAPPING



ORGANIZING



knoweats!

