



Sant Julià de Lòria

Andorra

30/05 - 31/05

2026





INFORMATION ABOUT THE EVENT



On the weekend of May 30th and 31st, we're taking cycling to Andorra, to Naturland, an ideal place to enjoy cycling in the mountains of Andorra, with areas adapted to all levels, whether you're a beginner or an expert, or if you prefer to come with your family, here you'll find the adrenaline you're looking for amidst the landscapes of La Rabassa.

We'll be able to enjoy authentic XCO with the Shimano Super Cup Massi and the participants of the Marathon Cup MTB, and there will also be time for the youngest riders with the XCO Super Cup Youth competition, for categories from pre-Benjamin to Infantil. In addition, there will be a race of the HERO UCI Marathon World Cup.

It will be a full weekend in a privileged space, also located within the adventure park facilities.

LOCATION



NATURLAND

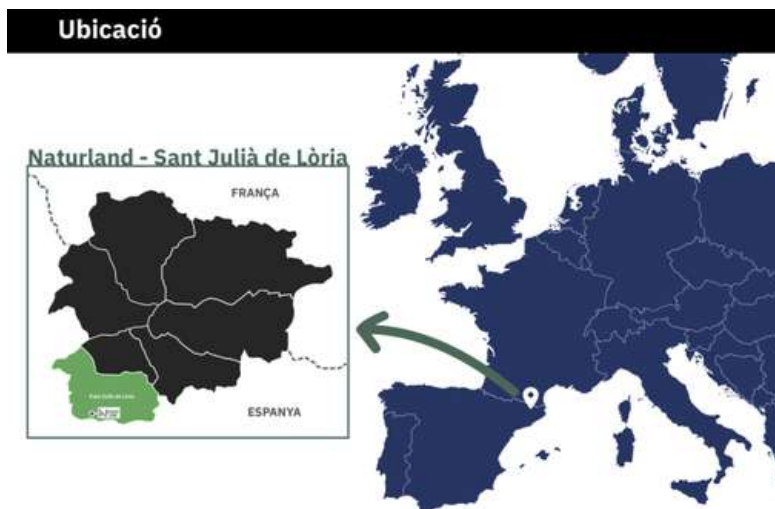


HOW TO GET THERE?

Address:

La Rabassa Nordic Ski Resort
 – Naturland (Cota 2000) Carretera de la Rabassa – Km.8 AD600 – Sant Julià de Lòria (Andorra)

Naturland is located in the parish of Sant Julià de Lòria, in the south of Andorra, about 15 km from Andorra la Vella, at an altitude of 2,000 meters.



By car:

From Spain:

From Barcelona: approximately 2h 45min (200km).

Take the C-16 to the Cadí Tunnel.

Continue along the N-145 to the Andorran border.

When you arrive in Sant Julià de Lòria follow the directions La Rabassa - Naturland (Cota 2000).

From Lleida: approximately 2 hours (150 km).

Take the C-14 towards Andorra.

We cross the border and continue towards Sant Julià de Lòria and then to La Rabassa – Naturland.

From France:

From Toulouse: approximately 2h 45min (190 km).

We take the A66 and then the N20 to Pas de la Casa.

We went through the Envalira Tunnel and followed the signs towards Sant Julià de Lòria.

Parking:

Naturland offers free parking at Cota 1600 and Cota 2000, but it is recommended to arrive earlier.



With Bus

Several bus companies connect Andorra with Spain and France.

From Spain

Directbus: Barcelona (Aeroport i Sants) – Andorra (3h).

Alsa: Departures from Barcelona, Lleida and Madrid.

Andbus: Barcelona – Andorra (3h).

Recommended stop: Sant Julià de Lòria. From there take a taxi or private transport to Naturland (Cota 2000).

From France

Montmantell or Andbus: Departures from Toulouse and other French cities.

By air

The closest airports to Andorra are:

Andorra-La Seu d'Urgell Airport (LEU)

km from Saint-Julian-de-Loria.

Commercial flights from Madrid with Air Nostrum.

Barcelona-El Prat Airport (BCN)

200 km from Andorra (3h by car or bus).

Bus connections available with Directbus or Andbus.

Aeropuerto de Toulouse-Blagnac (TLS)

A 190 km from Andorra (2h 45min en coche).

Buses available from Tolosa to Andorra.



INFORMATION OF INTEREST

Accommodation nearby

Hotel Folch – Calle del Oria, 6, AD600 San Julián de Loria Imperial – Av. Rocafort 27, AD600 San Julián de Loria Hotel Sol-Park – AD600 San Julián de Loria Hotel Barcelona – Ctra. Is de Civís (Aixovall), AD600 Sant Julià de Lòria

Nearby restaurants

Restaurant Pizzeria Venice – Av. Rocafort 19, Sant Julià de Lòria Borda de l'Avi – Carretera de la Rabassa, km 6, Sant Julià de Lòria Restaurante San Telmo – Av. Virgin of Canòlich, 25, Sant Julià de Lòria

Nearby hospitals

Our Lady of Meritxell Hospital – Av. Fiter and Rossell Sant Julià Medical Center – Av. Virgen de Canòlich, San Julián de Loria

Parking areas

Naturland Parking – Parking within the park grounds Sant Julià de Lòria Municipal Parking – Located in the town centre Tobotronc Parking – For park visitors

Map of Information of Interest:
<https://comusantjulia.ad/ca/turisme/allotjaments-restauracio-i-aparcaments/planol/>

Other useful information

Currency: Euro (€)

Language: Catalan (Spanish and English are widely spoken)

Emergency telephone number: 112

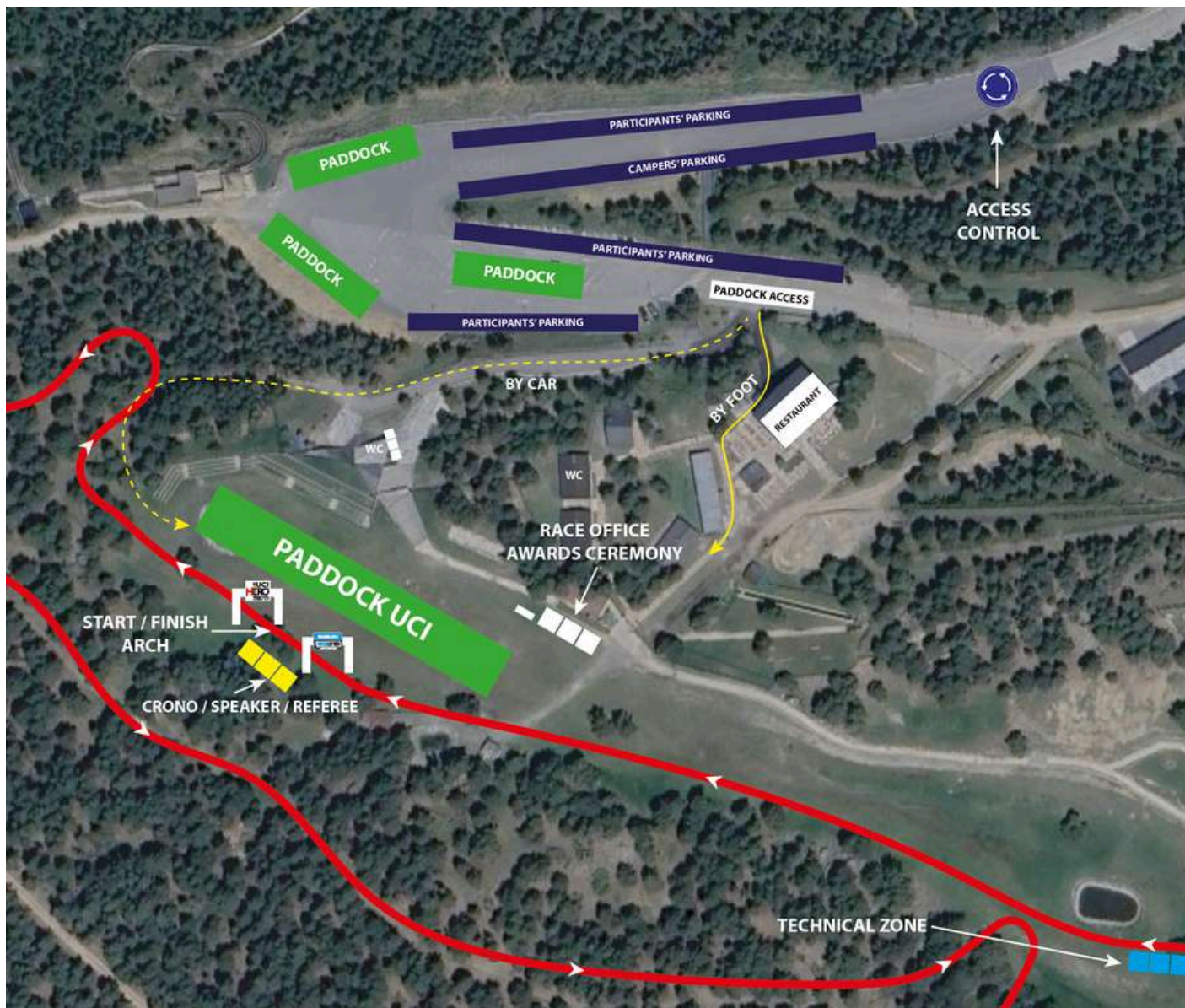
Voltage: 230V, plug type F (European standard)



EVENT MAP



NATURLAND COTA 2000



INSTITUTIONAL SPONSOR



COMPENSACIÓ EDICIÓ 2025



SPONSOR CCI

SPONSORS SUPERCUP



SPONSORS MARATHON BTT



SPONSOR WORLD CUP



OFFICIAL NUTRITION



OFFICIAL BIKE WASH



SUPPORTED BY



OFFICIAL MAPPING



ORGANIZING



PROGRAM

Saturday, May 30th



SHIMANO SUPER CUP MASSI

- 08:00h → Bib collection (up to 30 minutes before each race)
- 09:30h → 1st start Cadet, Junior (F), Master (F) and Master 40/50/60 (M)
- 11:00h → 2ª start Elite (F), S23 (F), Junior (M) y Master 30 (M)
- 11:15h → Awards ceremony Cadet, Junior (F), Master 30/40 (F) i Master 40/50/60 (M)
- 12:45h → 3ª Salida Elite/S23 (M)
- 14:15h → Awards Ceremony Shimano Super Cup Massi
- 14:00h → 15:15h Super Cup Youth Circuit Reconnaissance

SUPER CUP YOUTH

- 09:00h – 16:00h → Super Cup Youth bib number collection
- 16:00h → Start of Pre-Benjamin Super Cup Youth
- 16:15h → Start of Benjamin Super Cup Youth
- 16:30h → Start PRINCIPIANTE Super Cup Youth
- 17:00h → Start of ALEVIN Super Cup Youth
- 17:50h → Start of INFANTIL Super Cup Youth
- 18:30h → Super Cup Youth Awards Ceremony

MARATHON CUP

- 12:00 - 18:00 → Bib collection Scott Marathon Cup.
- 12:00 - 18:00 → Bib collection Hero UCI Marathon World Cup.

Sunday, May 31st

MARATHON CUP

- 7:00h - 9:00h → Bib collection SCOTT Marathon Cup
- 09:30h → Start SCOTT Marathon Cup BTT XCM
- 09:35h → Start SCOTT Marathon Cup BTT XCP

HERO UCI MARATHON WORLD CUP

- 7:00-8:00 → Bib number collection
- 8:30h → Salida Elite HERO UCI MARATHON WORLD CUP NATURLAND (ANDORRA)
- 8:35 → Salida Eit (W) HERO UCI MARATHON WORLD CUP
- 8:36 → Start of the Masters HERO UCI MARATHON WORLD CUP

- 12:30 PM → HERO UCI MARATHON WORLD CUP Awards Ceremony
- 13:00h → SCOTT Marathon BTT Naturland Awards Ceremony





SHIMANO SUPERCUP MTB MASSI 2026

NATURLAND ANDORRA

DISSABTE 30 MAIG 2026

08:00H RECOLLIDA DE DORSALS FINS A 30 MINUTS
ABANS DE CADA CURSA

09:30H SORTIDA CADET | JÚNIOR (F) | MASTERS (F)
M40/50/60 (M)

11:00H SORTIDA ELIT/S23 (F) | JÚNIOR (M) | M30 (M)

11:15H ENTREGA DE PREMIS

12:45H SORTIDA ELIT/S23 (M)

14:15H ENTREGA DE PREMIS

16:00H INICI SUPER CUP YOUTH

18:30H ENTREGA DE PREMIS



TITLE SPONSOR



MAIN SPONSOR



OFFICIAL SPONSOR



OFFICIAL BIKE WASH



SUPPORTED BY



SHIMANO



OFFICIAL MAPPING



ORGANIZING



SHIMANO SUPERCUP MTB MASSI

2026



CALENDAR UCI XCO

-  07-08 FEB LA NUCÍA ALICANTE
-  21-22 FEB BANYOLES GIRONA
-  22 MAR SABIÑÁNIGO HUESCA
-  26 ABR SANTA SUSANNA BARCELONA
-  02 MAY VITORIA-GASTEIZ ÁLAVA
-  30 MAY NATURLAND ANDORRA
-  19 SEP SEA OTTER EUROPE GIRONA

TITLE SPONSOR SHIMANO	MAIN SPONSOR MASSI	OFFICIAL SPONSOR INVERSE	Powerbar	SIROKO
OFFICIAL BIKE WASH PRORIDE <small>by PROQUIMA</small>	SUPPORTED BY UCI	SHIMANO <small>COSTA BRAVA GIRONA</small> SEA OTTER EUROPE <small>GARMIN</small>	OFFICIAL MAPPING wikiloc	ORGANIZING OCISPORT <small>OUTDOOR EXPERIENCES</small>

COPA CATALANA

INTERNACIONAL BTT

2026

Biking Point



CALENDARI UCI XCO



31 GEN ST FRUITÓS DE BAGES BARCELONA



21-22 FEB BANYOLES GIRONA



15 MAR CORRÓ D'AMUNT BARCELONA



25-26 ABR SANTA SUSANNA BARCELONA



30 MAI NATURLAND ANDORRA



06 JUN LA MOLINA GIRONA

TITLE SPONSOR

Biking Point

MAIN SPONSOR

MASSI SHIMANO

OFFICIAL SPONSOR

INVERSE

OFFICIAL SPONSOR

PRORIDE
by PROQUINA

SUPPORTED BY

UCI REAL FEDERACION ESPAÑOLA
CICLISMO

FEDERACIO
CATALANA
CICLISME
1994

esportcat

Generalitat
de Catalunya

OFFICIAL MAPPING

wikiloc

ORGANIZING

OCISPORT 25
OUTDOOR EXPERIENCES

WWW.COPACATALANABTT.COM

[COPACATALANAINTERNACIONALBTT](https://www.facebook.com/COPACATALANAINTERNACIONALBTT)

[SUPERCUP.CCI](https://www.instagram.com/SUPERCUP.CCI)

WWW.COPACATALANABTT.COM



SHIMANO SUPER CUP MASSI



The Shimano Super Cup Massi is the world's leading mountain bike competition. Since its inception in 2002, its prestige has grown spectacularly. After a long history, it is the second circuit with the most points awarded worldwide. Circuit de 7 probes format XCO de categoria UCI i puntuable per al rankning Mundial.



TITLE SPONSOR



MAIN SPONSOR



OFFICIAL SPONSOR



OFFICIAL BIKE WASH



SUPPORTED BY



OFFICIAL MAPPING



ORGANIZING



REGISTRATION

Registrations can be made through the registration form available on the event website until 23.59 on the Wednesday before the event.

Payment will be made directly on the website; if payment is not made, registration will not be confirmed.

Telephone: +34 938 088 091.

Email: hola@ocisport.net, www.ocisport.net.



WWW.SUPERCUPMTB.COM



REGULATION

The official rules of the event can be found on the event website.

[REGULATION](#)

TITLE SPONSOR

SHIMANO

MAIN SPONSOR

MASSI

OFFICIAL SPONSOR

INVERSE

Powerbar

SIROKO

OFFICIAL BIKE WASH

PRORIDE
by PROQUIMIA

SUPPORTED BY

UCI

REAL FEDERACIÓN ESPAÑOLA
CICLISMO

OFFICIAL MAPPING

SHIMANO
COSTA BRAVA I DRONIA
SEA OTTER EUROPE
GARMIN

OFFICIAL MAPPING

wikiloc

ORGANIZING

OCISPORT
OUTDOOR EXPERIENCES

PROGRAM

- 08:00h → Bib collection (up to 30 minutes before each race)
- 09:30h → 1st Start Cadet, Junior (F), Master (F) and Master 40/50/60 (M)
- 11:00h → 2ª Start Elite (F), S23 (F), Junior (M) y Master 30 (M)
- 11:15h → Awards ceremony Cadet, Junior (F), Master 30/40 (F) i Master 40/50/60 (M)
- 12:45h → 3ª Start Elite/S23 (M)
- 2:15 PM → Awards Ceremony Shimano Super Cup Massi
- 14:00h → 15:15h Super Cup Youth Circuit Reconnaissance



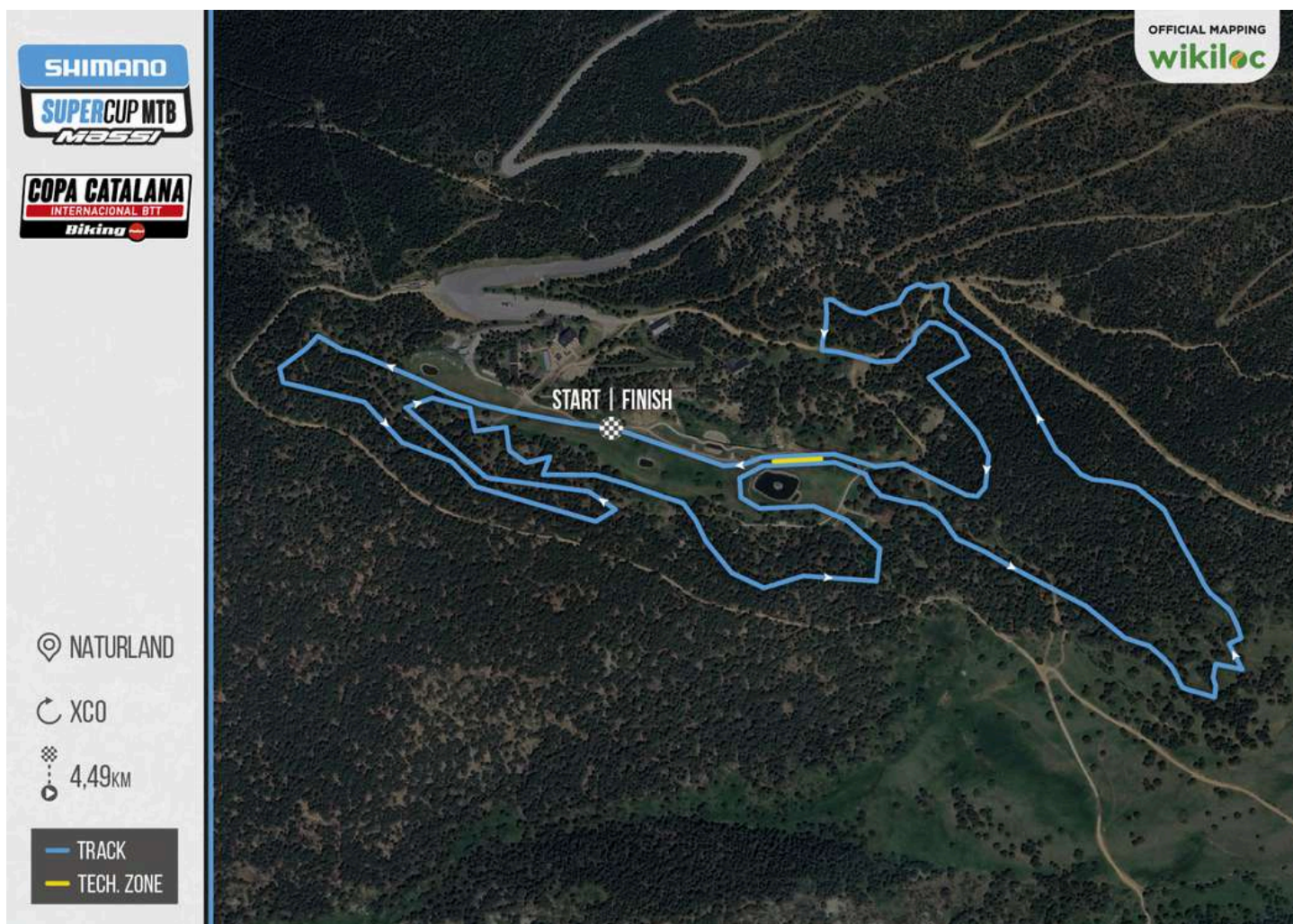
Robust.
Intuitive.
Consistent.

¡Descúbrelo!

WWW.SUPERCUPMTB.COM

<small>TITLE SPONSOR</small> 	<small>MAIN SPONSOR</small> 	<small>OFFICIAL SPONSOR</small> 	<small>OFFICIAL SPONSOR</small> 	<small>OFFICIAL SPONSOR</small>
<small>OFFICIAL BIKE WASH</small> 	<small>SUPPORTED BY</small> 	<small>SUPPORTED BY</small> 	<small>OFFICIAL MAPPING</small> 	<small>ORGANIZING</small>
<small>ORGANIZING</small> 				

TRACK XCO



TITLE SPONSOR

SHIMANO

MAIN SPONSOR

MASSI

OFFICIAL SPONSOR

INVERSE

Powerbar

SIROKO

OFFICIAL BIKE WASH

PRORIDE
by PROQUIMIA

SUPPORTED BY

UCI

REAL FEDERACIÓN ESPAÑOLA
CICLISMO

OFFICIAL MAPPING

SHIMANO
COSTA BRAVA I DORONA
SEA OTTER EUROPE
GARMIN

OFFICIAL MAPPING

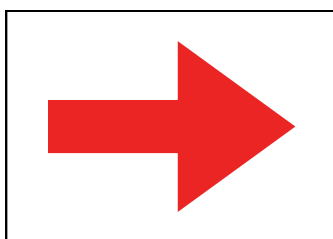
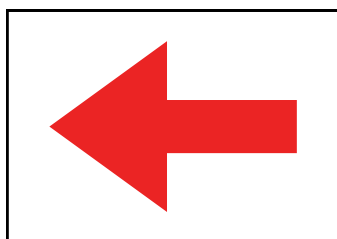
wikiloc

ORGANIZING

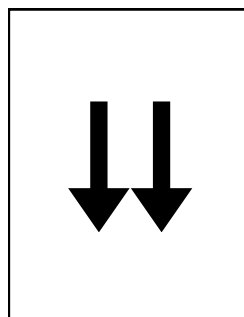
OCISPORT
OUTDOOR EXPERIENCES

ROUTE

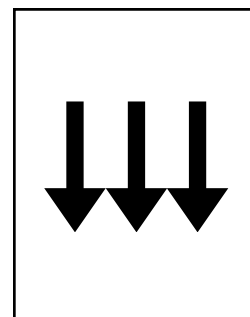
SIGNALING



Address



Caution



Extreme caution

The route will be marked with Shimano and Massi tape.



Accede a las rutas oficiales de OCISPORT BIKE en Wikiloc

TITLE SPONSOR

SHIMANO

MAIN SPONSOR

MASSI

OFFICIAL SPONSOR

INVERSE

Powerbar

SIROKO

OFFICIAL BIKE WASH

PRORIDE
by PROQUIMIA

SUPPORTED BY

UCI

REAL FEDERACIÓN ESPAÑOLA
CICLISMO

SHIMANO
COSTA BRAVA I DORONA
SEA OTTER EUROPE
GARMIN

OFFICIAL MAPPING

wikiloc

ORGANIZING

OCISPORT
OUTDOOR EXPERIENCES

SERVICES

BIB NUMBER

At the first race you participate in, you will collect your race number, which will be the same for all subsequent races in the circuit. In case of loss, a fee of 5 euros will be charged for the replacement race number and the participant's re-registration.

In the first race you participate in, you also receive the circuit's complimentary t-shirt.



*The backpacks of the International Catalan Cup are only valid for Sant Fruitós, Corró d'Amunt and La Molina.



TITLE SPONSOR

SHIMANO

MAIN SPONSOR

MASSI

OFFICIAL SPONSOR

INVERSE

Powerbar

SIROKO

OFFICIAL BIKE WASH

PRORIDE
by PROQUIMIA

SUPPORTED BY

UCI

REAL FEDERACIÓN ESPAÑOLA
CICLISMO

OFFICIAL MAPPING

SHIMANO
COSTA BRAVA I DORONA
SEA OTTER EUROPE
GARMIN

OFFICIAL MAPPING

wikiloc

ORGANIZING

OCISPORT
OUTDOOR EXPERIENCES

SERVICES

PREMISE

They will be awarded to the XCO race as follows:

Ranking	HC		C1		C2	
	ÉLITE (M/F)	JÚNIOR (M/F)	ÉLITE (M/F)	JÚNIOR (M/F)	ÉLITE (M/F)	JÚNIOR (M/F)
1	1.000€	200€	600€	130€	250€	80€
2	800€	130€	500€	100€	200€	65€
3	600€	100€	400€	80€	150€	50€
4	500€	80€	300€	65€	125€	30€
5	400€	65€	250€	55€	100€	25€
6	300€	50€	200€	45€	90€	
7	250€	45€	150€	40€	80€	
8	200€	30€	125€	30€	70€	
9	150€	25€	100€	25€	60€	
10	100€	20€	50€	20€	50€	
TOTAL	4.300€	745€	2.675€	590€	1.175€	250€

Prizes will be paid to the winners via bank transfer within two months of the race. The runner's dossier and the information panel for each race will detail the procedure for claiming the prize.

If you are one of the winners, you can send an email to rperez@ocisport.net providing your personal and banking credentials (ID and bank details), so that the organization can validate your identity and make the bank transfer corresponding to the prize won.

Download
Exclusive Nutrition Guide



TITLE SPONSOR: **SHIMANO** | MAIN SPONSOR: **MASSI** | OFFICIAL SPONSOR: **INVERSE**, **Powerbar**, **SIROKO**

OFFICIAL BIKE WASH: **PRORIDE** | SUPPORTED BY: **UCI**, **CICLISMO** | OFFICIAL MAPPING: **wikiloc** | ORGANIZING: **OCISPORT**

SHIMANO COSTA BRAVA I BIRONA SEA OTTER EUROPE GARMIN

MORE INFORMATION

CATEGORIES

- Women: Elite, Under 23, Junior, Cadet, Master 30, Master 40 and Master 50/60.
- Men: Elite, Under 23, Junior, Cadet, Master 30, Master 40 and Master 50/60.

CHAMPIONSHIP SCORE

As regards the GENERAL classification of the Super Cup, the 6 best results of each participant will count towards the points.

The distribution of points for the championship will be as follows:

CHAMPIONSHIP POINTS							
1	300	26	33	51	18	76	12
2	262	27	33	52	18	77	12
3	232	28	33	53	18	78	12
4	210	29	33	54	18	79	12
5	192	30	33	55	18	80	12
6	180	31	30	56	18	81	9
7	168	32	30	57	18	82	9
8	156	33	30	58	18	83	9
9	142	34	30	59	18	84	9
10	142	35	30	60	18	85	9
11	120	36	27	61	15	86	9
12	114	37	27	62	15	87	9
13	108	38	27	63	15	88	9
14	102	39	27	64	15	89	9
15	96	40	27	65	15	90	9
16	90	41	24	66	15	91	6
17	84	42	24	67	15	92	6
18	78	43	24	68	15	93	6
19	72	44	24	69	15	94	6
20	66	45	24	70	15	95	6
21	60	46	21	71	12	96	6
22	54	47	21	72	12	97	6
23	48	48	21	73	12	98	6
24	42	49	21	74	12	99	6
25	36	50	21	75	12	100	6
						101<	3

TITLE SPONSOR

SHIMANO

MAIN SPONSOR

MASSI

OFFICIAL SPONSOR

INVERSE

Powerbar

SIROKO

OFFICIAL BIKE WASH

PRORIDE
by PROQUIMIA

SUPPORTED BY

UCI

REAL FEDERACIÓN ESPAÑOLA
CICLISMO

OFFICIAL MAPPING

SHIMANO
COSTA BRAVA I BIRONA
SEA OTTER EUROPE
GARMIN

OFFICIAL MAPPING

wikiloc

ORGANIZING

OCISPORT
OUTDOOR EXPERIENCES

MORE INFORMATION

For the TEAM Classification, points will be awarded as follows:

They will score 100% of the points:
 · 2 Elite · 2 Under 23 · 2 Elite Women · 2 Under 23 Women

They will account for 60% of the points:
 • 2 Junior Male • 2 Junior Female • 2 Cadet Male • 2 Cadet Female

They will account for 40% of the points:
 • 2 Men's Master 30 • 2 Women's Master 30 • 2 Men's Master 40 • 2 Women's Master 40 • 2 Men's Master 50

PUNTS UCI

The UCI points will be distributed as follows, according to the category:

UCI POINTS - ONE DAY RACE							
PLACE	HC		C1		C2	XCO JUNIOR	XCO JUNIOR SERIES
	ELITE/ U23	U23**	ELITE/ U23	U23**	ELITE/U23	JUNIOR	JUNIOR
1	100	60	60	15	30	20	90
2	80	40	40	10	25	18	70
3	60	30	30	5	15	16	60
4	50	25	25	3	12	14	50
5	40	20	20	1	10	12	40
6	35	18	18	X	8	10	35
7	30	16	16		6	8	30
8	27	14	14		4	6	27
9	24	12	12		2	4	24
10	22	10	10		1	2	22
11	20	8	8		X	X	20
12	18	6	6				18
13	16	4	4				16
14	14	2	2				14
15	12	1	1				12
16	10	X	X				10
17	9						8
18	8						7
19	7						6
20	6						5
21	5						4
22	4						3
23	3						2
24	2						1
25	1						X
26	X						

*The scoring may be modified according to the updated regulations of the International Cycling Union (UCI).

**In the case of completing the Elite and U23 races separately.

TITLE SPONSOR



MAIN SPONSOR



OFFICIAL SPONSOR



OFFICIAL BIKE WASH



SUPPORTED BY



OFFICIAL MAPPING



OFFICIAL MAPPING



ORGANIZING



POINTS CATALAN CUP CHAMPIONSHIP

For the overall classification of the 2026 Catalan International Cup, the six best results, including the individual time trial, will count. In this race, points will be awarded for both the Catalan Cup and the Shimano Super Cup Massi.

The distribution of points for the championship will be as follows:

CHAMPIONSHIP POINTS							
1	200	26	22	51	12	76	8
2	175	27	22	52	12	77	8
3	155	28	22	53	12	78	8
4	140	29	22	54	12	79	8
5	128	30	22	55	12	80	8
6	120	31	22	56	12	81	6
7	112	32	22	57	12	82	6
8	104	33	22	58	12	83	6
9	96	34	22	59	12	84	6
10	88	35	22	60	12	85	6
11	80	36	18	61	10	86	6
12	76	37	18	62	10	87	6
13	72	38	18	63	10	88	6
14	68	39	18	64	10	89	6
15	64	40	18	65	10	90	6
16	60	41	16	66	10	91	4
17	56	42	18	67	10	92	4
18	52	43	18	68	10	93	4
19	48	44	18	69	10	94	4
20	44	45	18	70	10	95	4
21	40	46	14	71	8	96	4
22	36	47	14	72	8	97	4
23	32	48	14	73	8	98	4
24	28	49	14	74	8	99	4
25	24	50	14	75	8	100	4
						101<	2

TITLE SPONSOR SHIMANO	MAIN SPONSOR MASSI	OFFICIAL SPONSOR INVERSE	Powerbar	SIROKO
OFFICIAL BIKE WASH PRORIDE by PROQUIMIA	SUPPORTED BY UCI	REAL FEDERACIÓN ESPAÑOLA CICLISMO	OFFICIAL MAPPING wikiloc	ORGANIZING OCISPORT OUTDOOR EXPERIENCES
SHIMANO COSTA BRAVA I BIRONA SEA OTTER EUROPE GARMIN				

Additional information

REFERENCE HOSPITAL

Our Lady of Meritxell Hospital –

Av. Fiter i Rossell Opening Hours: Open 24 hours

HOSPITAL LA SEU DE URGELL Paseo de Joan Brudieu, 8,
25700 La Seu d'Urgell, Lleida Hours: Open 24 hours
Telephone: 973350050

EMERGENCY TELEPHONE

Organization:

- +34 638 602 777
- +376 646 527

Emergencies: 112

INSTITUTIONAL SPONSORS



SPONSORS SUPER CUP



SPONSORS CCI



SPONSORS MARATHON CUP



SPONSORS WORLD CUP



OFFICIAL NUTRITION



OFFICIAL BIKE WASH



SUPPORTED BY



OFFICIAL MAPPING



ORGANIZING

